
RSIC B.V.
Hoge Rijndijk 88K
2313 KL Leiden
The Netherlands
Tel : +31-71-5680965
Fax : +31-71-5680966
E-mail : info@rsic.nl
Website : www.rsic.nl

RSIC Survey Professional™

Turn-key mobile forms for any organization

For those organizations that want to use RSIC Survey, without having to deal with integration issues, RSIC offers RSIC Survey Professional. This variant of RSIC Survey is a full-service hosted solution offering all power and versatility of RSIC Survey in an easy to use format and as such, ideal for organizations that want a turn-key mobile forms solution.

RSIC Survey Professional offers:

- Creation and management of mobile forms from a secure web-server.
- Web based management of user accounts.
- Automatic consolidation of gathered data from different users in the server database.
- Web based management of all gathered data.
- Web based dynamic reporting functionality, for easy creation and management of reports.
- Web based export of data in industry standard formats, such as .PDF, .XML, .XLS and .CSV.



This at a price of € 10,- per user, per month (excluding VAT where applicable), that includes all regular support and maintenance costs. For organizations with more than 250 users, RSIC can offer volume discounts.

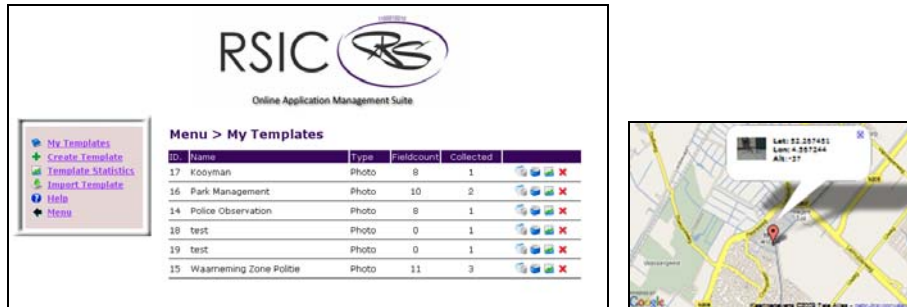
The RSIC Survey Professional client software has all the functionality of RSIC Survey and thus offers the possibility to create mobile forms with GPS, photograph, RSS and many more field types. This opens up an enormous array of possible applications for the entire organization, without having to worry about data consolidation, management and reporting. Please refer to the product information of RSIC Survey for more information about possible applications.

Additional options

The following additional options are available at additional costs and can be made part of any RSIC Survey Professional offering:

- 24x7 support via E-mail
- 24x7 support via telephone
- On-site installation of the RSIC Survey Professional server

- Optional lease or rental of BlackBerry devices
- Synchronization of RSIC Survey Professional database with other databases



RSIC Survey Professional offers an extensive web-based management interface for viewing and managing users and collected data.

Client requirements

The following requirements apply for the of RSIC Survey Professional client software:

- BlackBerry® smartphone (both BES or BIS)
- BlackBerry® OS 4.3 or higher
- BlackBerry smartphone model with camera or SD card required for Photo Template functionality
- BlackBerry smartphone with internal GPS or an external NMEA compatible Bluetooth GPS antenna required for GeoTagging

Contact details

If you would like to have more information about this solution, please contact one of our sales representatives or technical consultants. You can reach them through the following channels:

Postal address:

RSIC
Hoge Rijndijk 88K
2313 KL Leiden
The Netherlands
Tel : +31-71-5680965
Fax : +31-71-5680966
Web : <http://www.rsic.mobi>
E-mail : sales@rsic.mobi

Copyright © 2008 RSIC - All rights reserved. ioned or displayed in this document are proper
All trademarks, images and brands mentty of their respective owners. Research In Motion, the RIM logo, BlackBerry, the BlackBerry logo and SureType are registered with the U.S. Patent and Trademark Office and may be pending or registered in other countries - these and other marks of Research In Motion Limited are used under license.